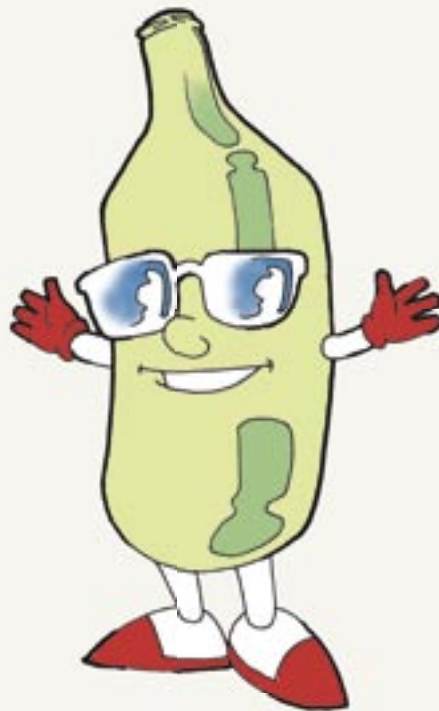
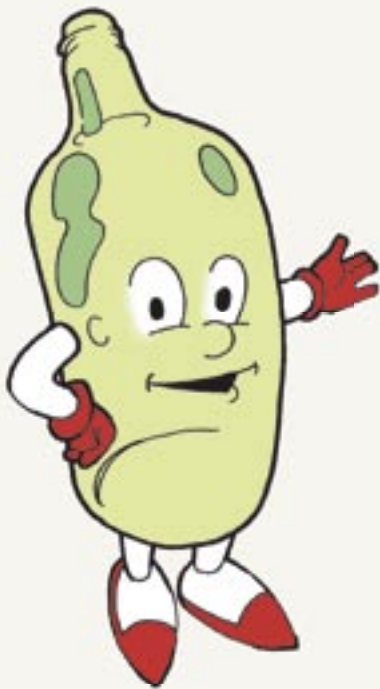


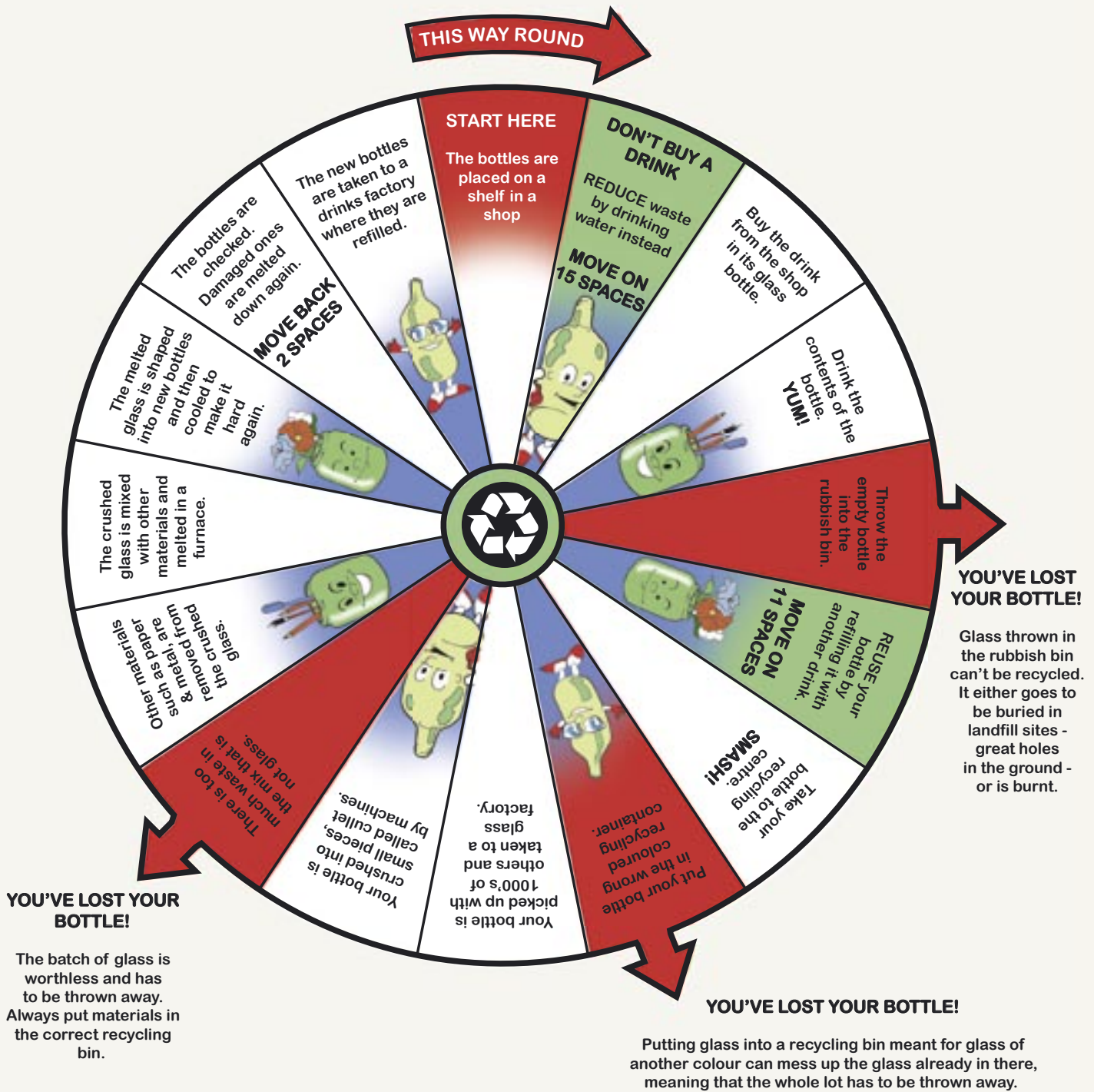
DON'T LOSE YOUR BOTTLE

How to Play!

- You will need a die and one counter for each player.
Why not make your own bottle-shaped counters?
- Read the game before you start.
Can you work out why the boxes are in 3 different colours?
- Start in the top space and move from box to box.
Take turns to throw the die and move your counter.
- If you land on one of the green boxes, move on the number of spaces shown.
- If you land on one of the red boxes, you've LOST YOUR BOTTLE and are out of the game.
- Continue until only one player is left – the winner!
How many times can you go round before you LOSE YOUR BOTTLE?
- If you enjoyed this game why not make up another 'Reduce, Reuse, Recycle' game to play with your friends?
- How, where and to whom could you market your game?



DON'T LOSE YOUR BOTTLE



CAN YOU AND YOUR FRIENDS DESIGN OTHER
WAKE UP TO WASTE
GAMES TO PLAY?